

Athens Commons

1712 Congress Pkwy S, Athens, TN 37303
McMinn County

TRICOR



HIGHLIGHTS

County: McMinn
Type: Land

CONTACT

Stacey CaChat
407.576.5239
stacey@tricolor.net

LAND AVAILABLE

- Opportunity for a Freestanding building with a drive thru
- Excellent visibility along US Route 11 at a signalized intersection shared with Lowe's Home Improvement
- Conveniently located close to I-75, Athens is the midway point between Chattanooga and Knoxville
- 20,000 + vehicles per day
- Close proximity to McMinn County Grade Schools (K-12), City & County Administrative Operations, Tennessee College of Applied Technology, and McMinn County Vocational School

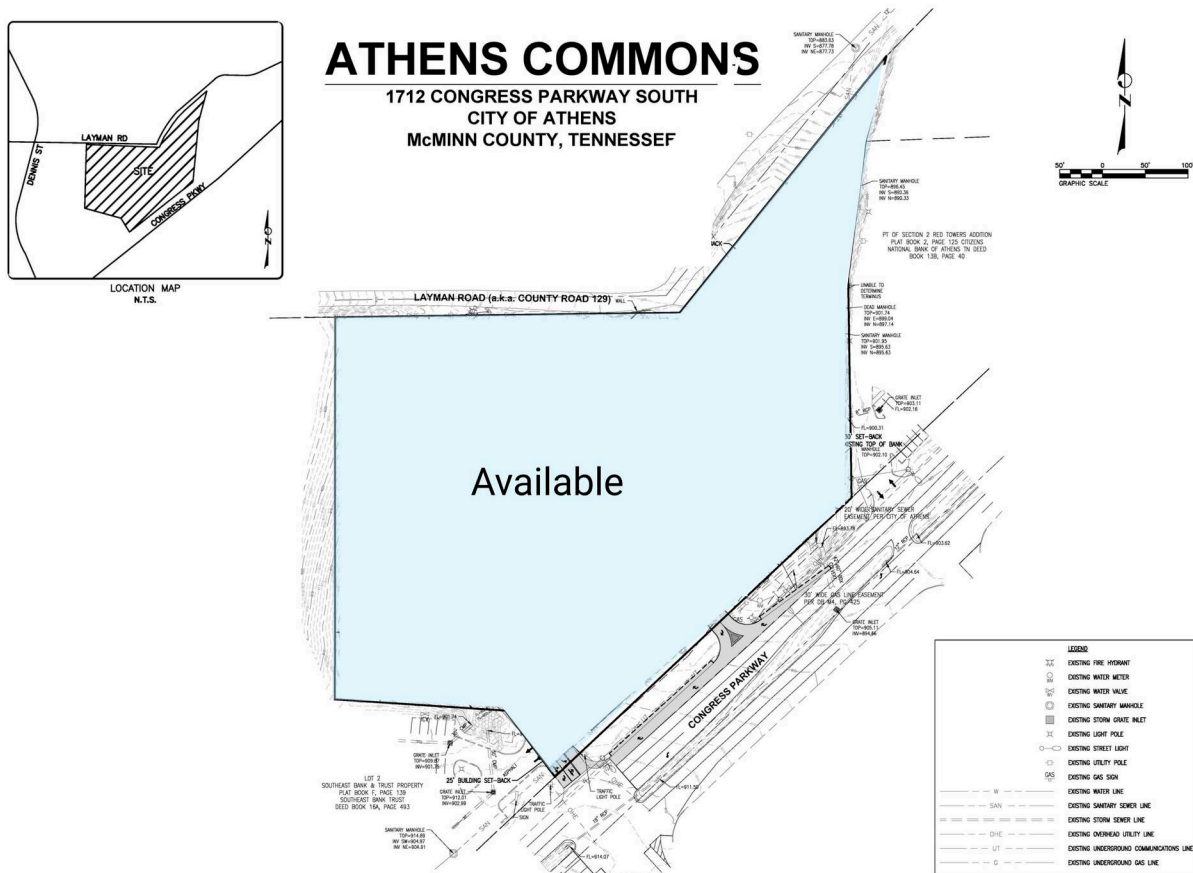
DEMOGRAPHICS

	3-MILE	5-MILE	10-MILE
Population	16,180	23,768	45,504
Households	6,730	9,732	18,535
Average Household Income (\$)	72,370	81,315	85,655

Athens Commons

1712 Congress Pkwy S, Athens, TN 37303
McMinn County

TRICOR



OP-01 Available

6.56 AC