

# Carlsbad OPs

2515A W Pierce Street, Carlsbad, NM 88220  
Eddy County



## HIGHLIGHTS

County: Eddy  
Type: Land

## CONTACT

Deirdre Delaporte  
407.775.1645  
Deirdre@Tricor.net

2 land parcels for Sale - 0.89 and 0.243 acres.

- New Development Opportunity in Carlsbad, NM - Join Planet Fitness and Lowes
- Two parcels available for purchase:

0.89 of an acre lot available

0.243 of an acre lot available

- Conveniently located between the New Mexico State University - Carlsbad (soon to be Southeast New Mexico College) and Carlsbad Medical Center
- Excellent visibility from US Route 285 with over 16,000 vehicles per day

## RETAILERS INCLUDE

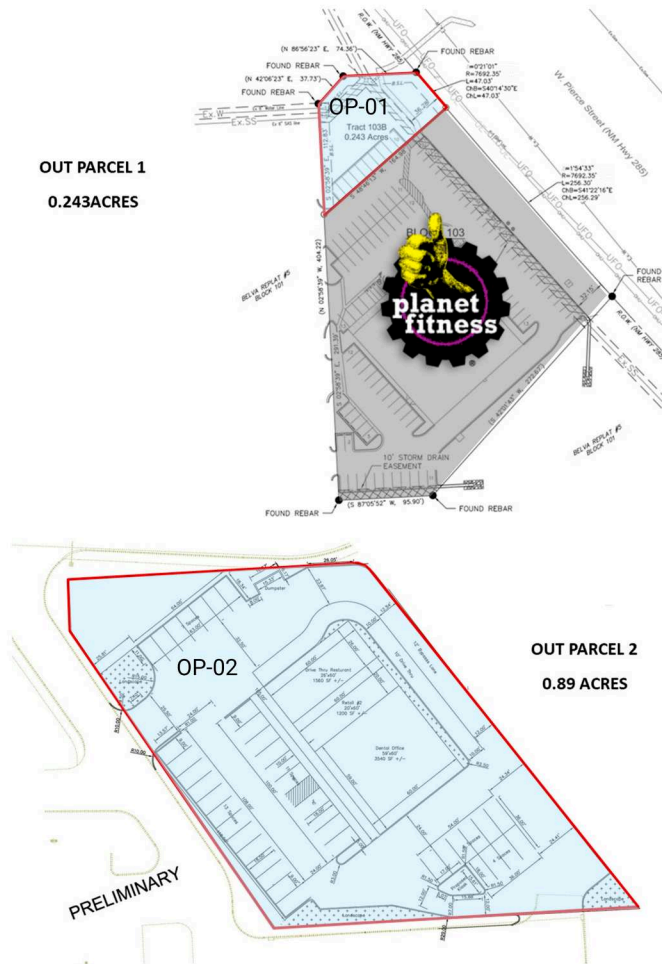


## DEMOGRAPHICS

	1-MILE	3-MILE	5-MILE
Population	4,410	22,000	28,736
Households	1,636	8,962	11,232
Average Household Income (\$)	160,272	125,110	118,849

# Carlsbad OPs

2515A W Pierce Street, Carlsbad, NM 88220  
Eddy County



Lowes LOWES

OP-01 Available 0.24 AC

OP-02 Available 0.89 AC

PF Planet Fitness