

Carlsbad OPs

2515A W Pierce Street, Carlsbad, NM 88220
Eddy County

TRICOR



HIGHLIGHTS

County: Eddy
Type: Land

CONTACT

Stacey CaChat
407.576.5239
stacey@tricolor.net

2 land parcels for Sale - 0.89 and 0.243 acres.

- New Development Opportunity in Carlsbad, NM - Join Planet Fitness and Lowes
- Two parcels available for purchase:

0.89 of an acre lot available

0.243 of an acre lot available

- Conveniently located between the New Mexico State University - Carlsbad (soon to be Southeast New Mexico College) and Carlsbad Medical Center
- Excellent visibility from US Route 285 with over 16,000 vehicles per day

DEMOGRAPHICS

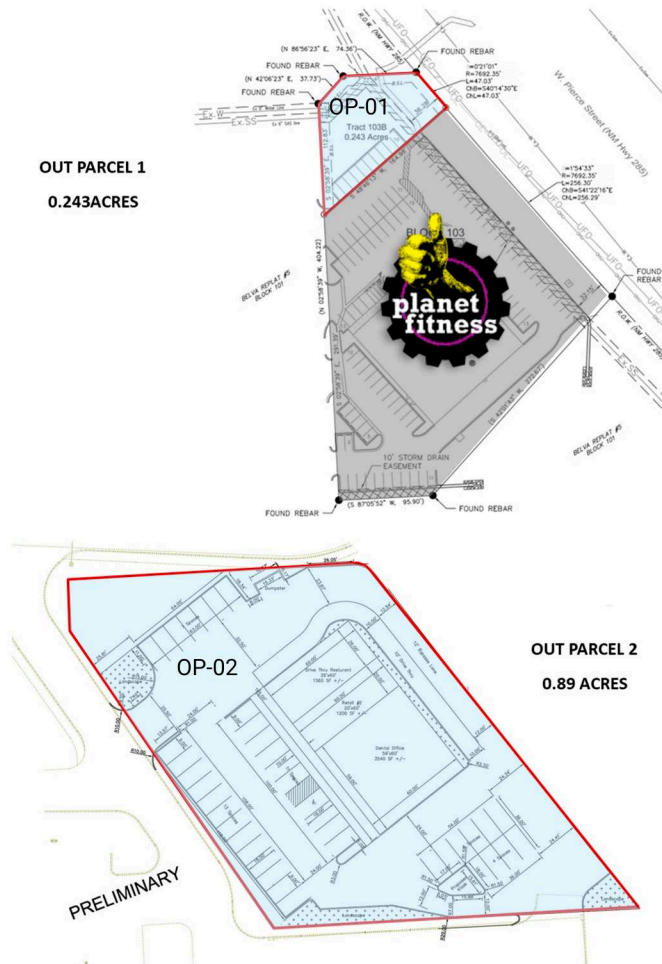
	1-MILE	3-MILE	5-MILE
Population	4,410	22,000	28,736
Households	1,636	8,962	11,232
Average Household Income (\$)	160,272	125,110	118,849

RETAILERS INCLUDE



Carlsbad OPs

2515A W Pierce Street, Carlsbad, NM 88220
Eddy County



Lowes LOWES

OP-01 Available 0.24 AC

OP-02 Available 0.89 AC

PF Planet Fitness