

Carlsbad OP

2515A W Pierce Street, Carlsbad, NM 88220
Eddy County



HIGHLIGHTS

County: Eddy
Type: Land

CONTACT

Stacey CaChat
407.576.5239
stacey@tricolor.net

Land parcel for Sale - 0.89 acres.

- New Development Opportunity in Carlsbad, NM - Join Planet Fitness and Lowes
- Conveniently located between the New Mexico State University - Carlsbad (soon to be Southeast New Mexico College) and Carlsbad Medical Center
- Excellent visibility from US Route 285 with over 16,000 vehicles per day

RETAILERS INCLUDE



DEMOGRAPHICS

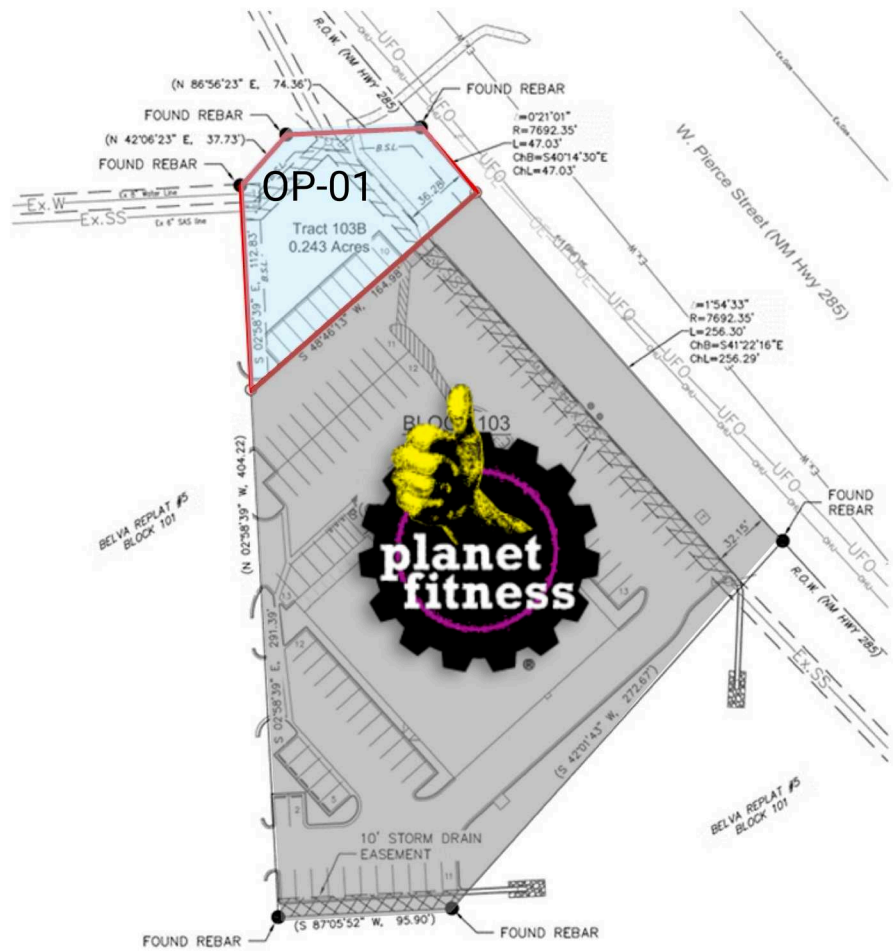
	3-MILE	5-MILE	10-MILE
Population	23,422	29,901	38,564
Households	8,948	11,272	14,289
Average Household Income (\$)	110,771	106,682	109,954

Carlsbad OP

2515A W Pierce Street, Carlsbad, NM 88220
Eddy County



OUT PARCEL 1
0.243ACRES



Lowes LOWES

PF Planet Fitness

OP-01 Available

0.24 AC