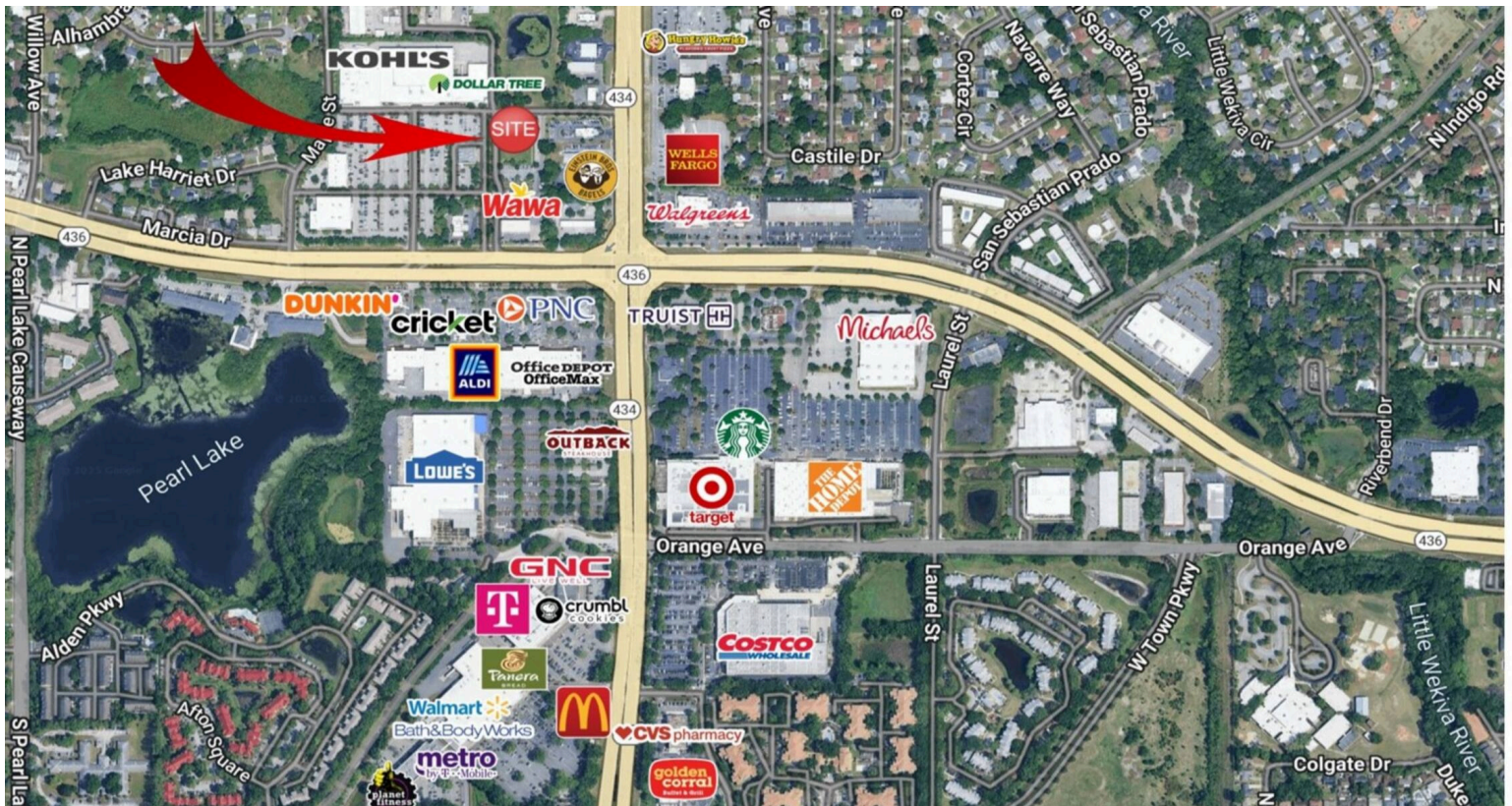


Altamonte Springs

919 West SR 434, Altamonte Springs, FL 32714
Seminole County

TRICOR



HIGHLIGHTS

County: Seminole
Type: Land

- Easy access to I-4 and major attractions in the Orlando market, Altamonte Springs is located 10-15 miles north of downtown Orlando.
- Situated within the Orlando- Sanford metropolitan area, the city offers a strategic position with access to a growing and skilled workforce, a competitive business environment and proximity to major markets.
- Altamonte Springs is committed to maintaining fiscal responsibility and striving to remain debt free while offering robust services at a low cost. This has resulted in one of the lowest tax rates in FL making it an attractive location for businesses seeking a cost-effective environment. Altamonte Springs collaborates with Seminole County to provide incentives for new and expanding businesses on a case by case basis.
- This trade area continues to be an ideal place for families, working professional and retirees with moderate positive growth on an annual basis with: highly rated public schools, access to local shopping, outdoor recreational areas such as Cranes Roost Park and Wekiwa Springs State Park.

RETAILERS INCLUDE



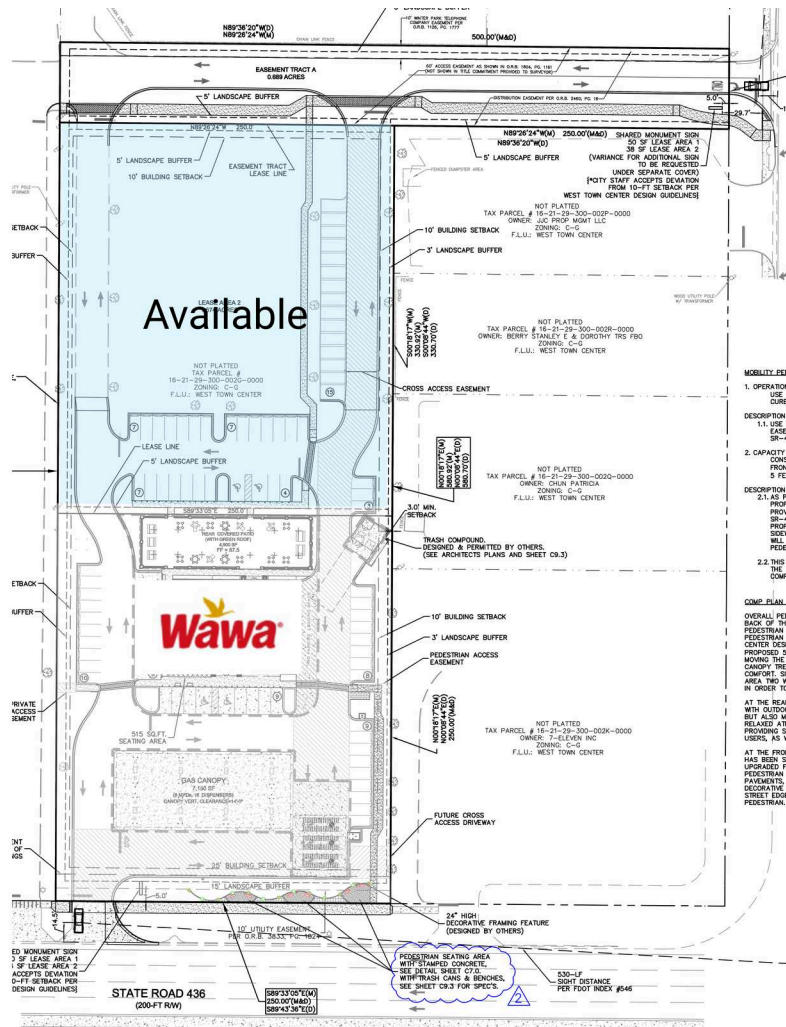
DEMOGRAPHICS

| | 3-MILE | 5-MILE | 10-MILE |
|-------------------------------|---------|---------|---------|
| Population | 108,298 | 220,326 | 774,157 |
| Households | 47,170 | 92,051 | 316,426 |
| Average Household Income (\$) | 108,200 | 105,138 | 115,463 |

Altamonte Springs

919 West SR 434, Altamonte Springs, FL 32714
Seminole County

TRICOR



AS-01 Wawa

AS-02 Available

1.67 AC